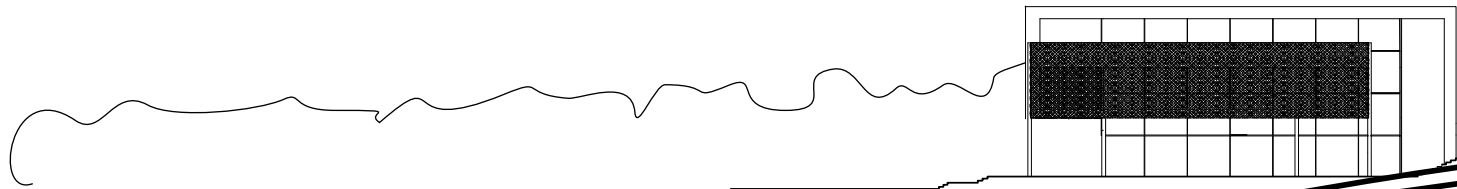


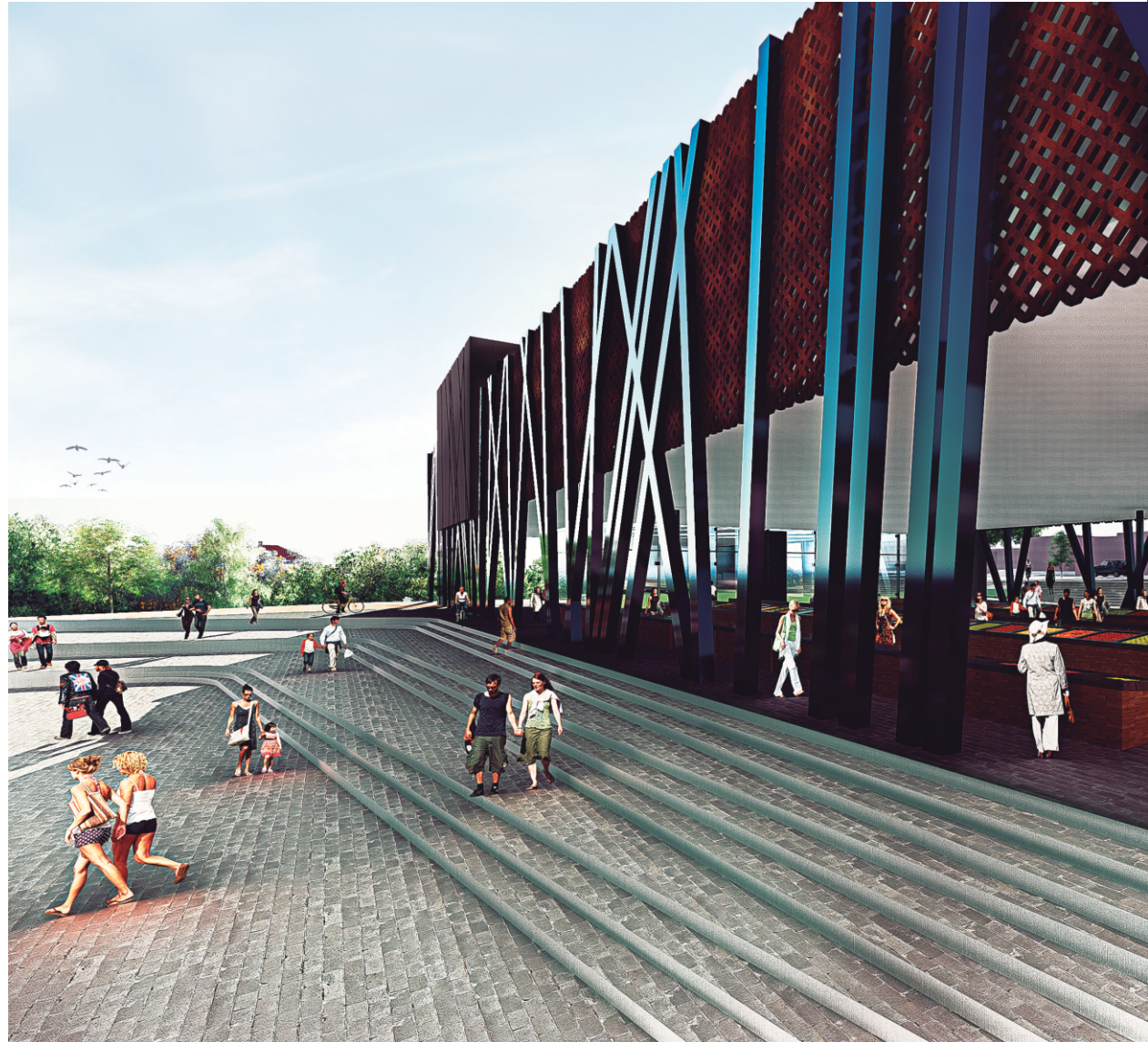
CENTRO POPULAR CULTURAL DE URUAÇU



UMA QUALIFICAÇÃO EM SINERGIA COM O ESPAÇO URBANO

TFGr 2 | 2017/1
ACADÊMICA: JENIFFER ROMÃO OLIVEIRA
ORIENTADORA: CELINA FERNANDES

01. JUSTIFICATIVA
ESCOLHA DO OBJETO DE TRABALHO
02. TEMÁTICA
PRESERVAÇÃO DA CULTURA E
VALORIZAÇÃO DO ESPAÇO URBANO
03. PROPOSTA CONCEITUAL
04. PROPOSTA PROJETUAL





PORANGATU

STA. TEREZA
DE GOIÁS

CAMPINAÇU

CAMPINORTE

URUAÇU

NIQUELANDIA

SÃO LUIZ
DO NORTE

BARRO
ALTO

DOIS IRMÃOS

BR-080

BR-153

BR-414



BRASILIA

ANÁPOLIS

GOIÂNIA

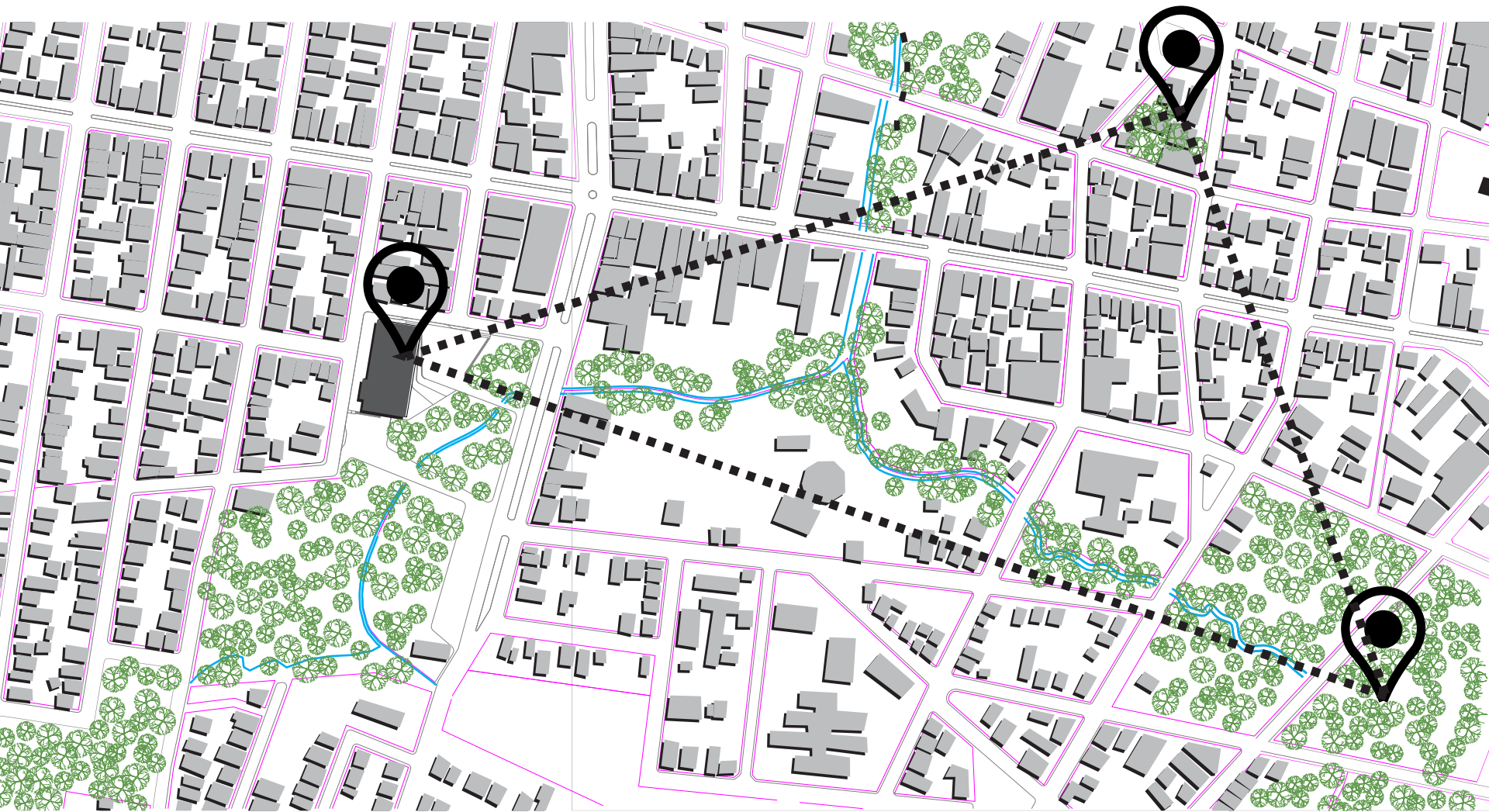
R ABASTECIMENTO E LAZER DE URUAÇU, ANTONIO DE FREITAS CARVALHO.

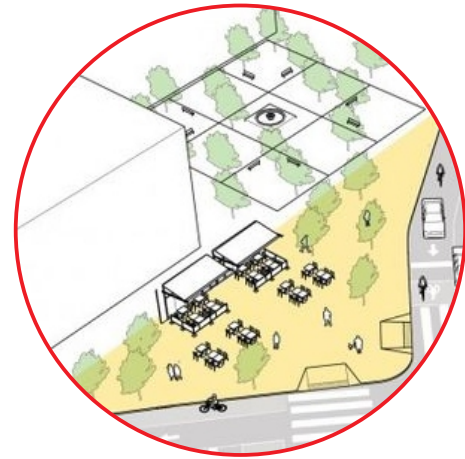
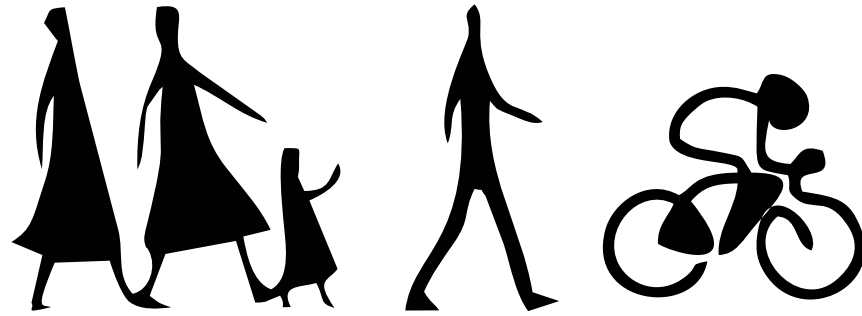
ANTONIO DE FREITAS CARVALHO





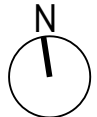


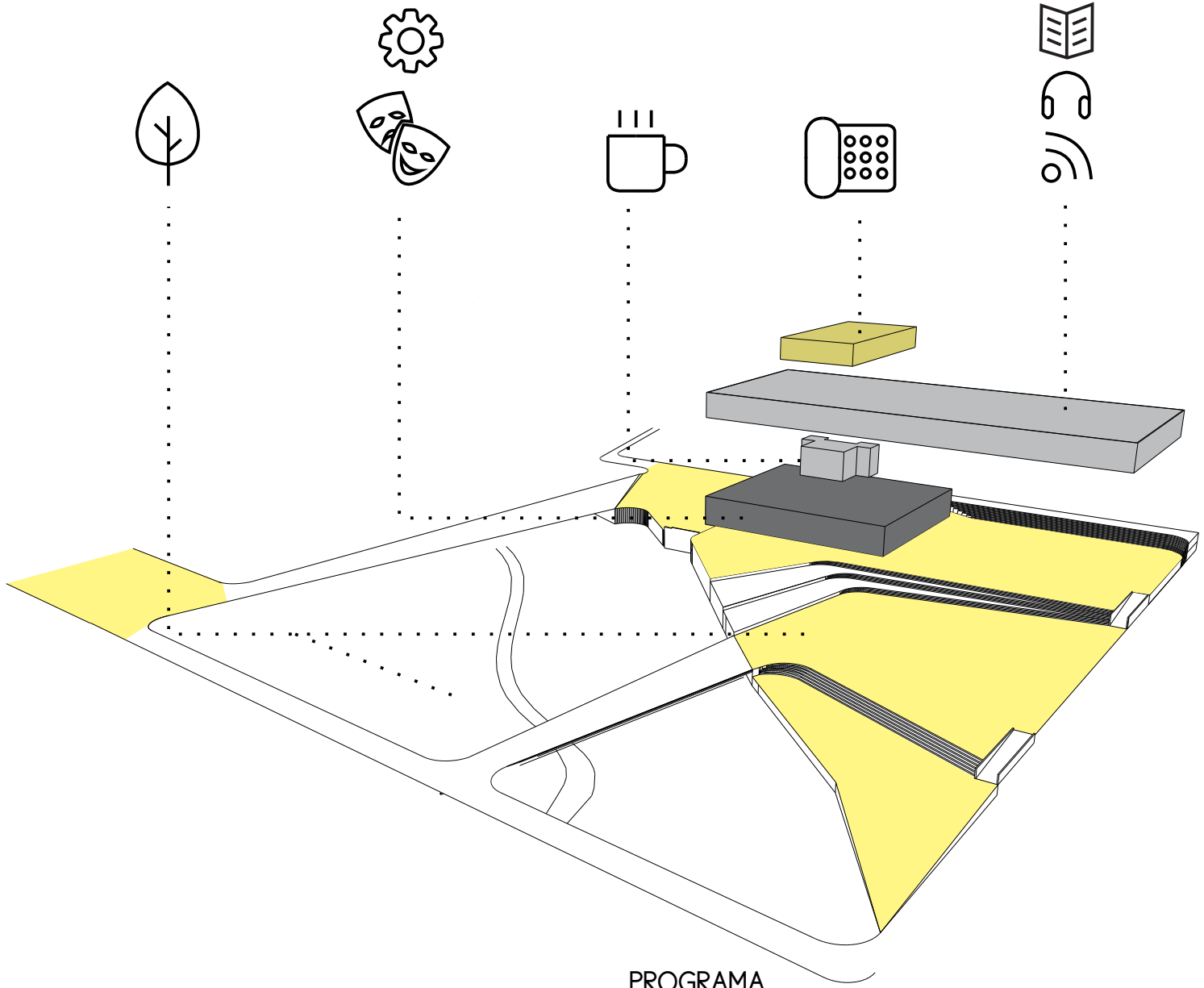






AVENIDA TOCANTINS





PROGRAMA

PERFIL DO USUÁRIO

FIXO

FUNCIONÁRIOS DO CENTRO

TEMPORÁRIOS

FEIRANTES

CLIENTES

VISITANTES

ARTISTAS DE RUA



Positivo Eventos

Brinquedoteca

Brinquedoteca







CULTURA

CAMINHOS

MANIFESTAÇÕES

ESPAÇOS LIVRES

Conhecimento

TROCA DE EXPERIÊNCIA

POPULAR

LAZER

EVENTOS

ÍCONE

CONHECIMENTO

CONEXÕES

natureza

Arte

URBANO

Comércio

DANÇA

QUALIFICAÇÃO

SOCIAL

VIVÊNCIA

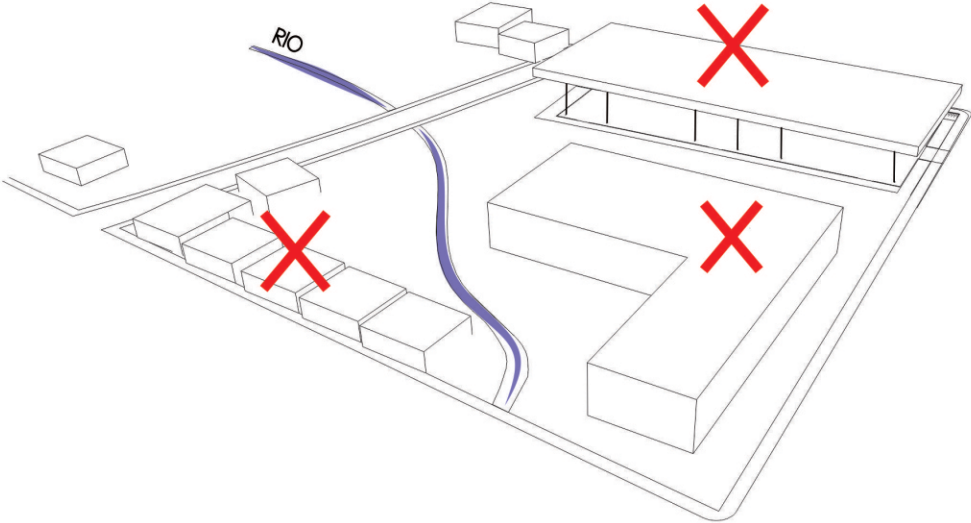
Referência

INTERAÇÃO

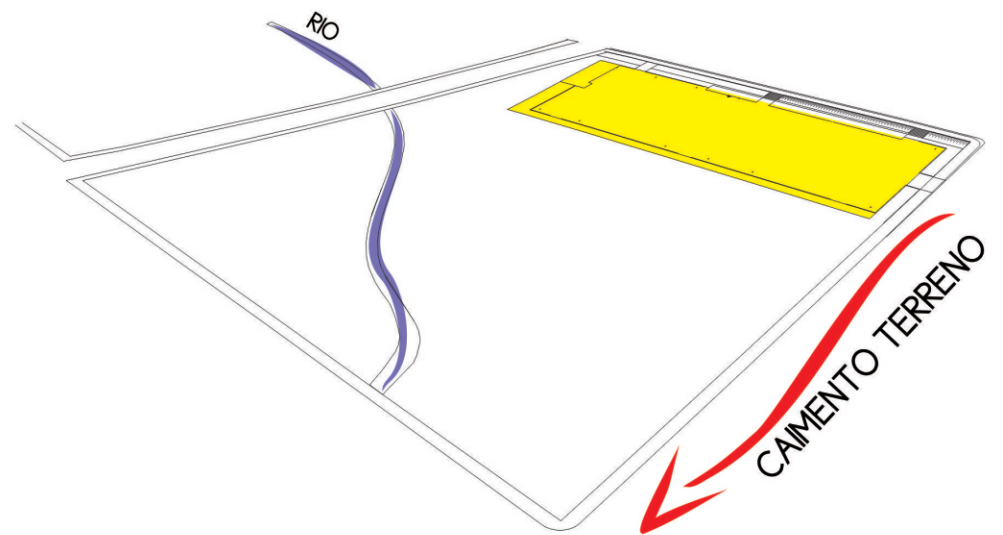
Transparência



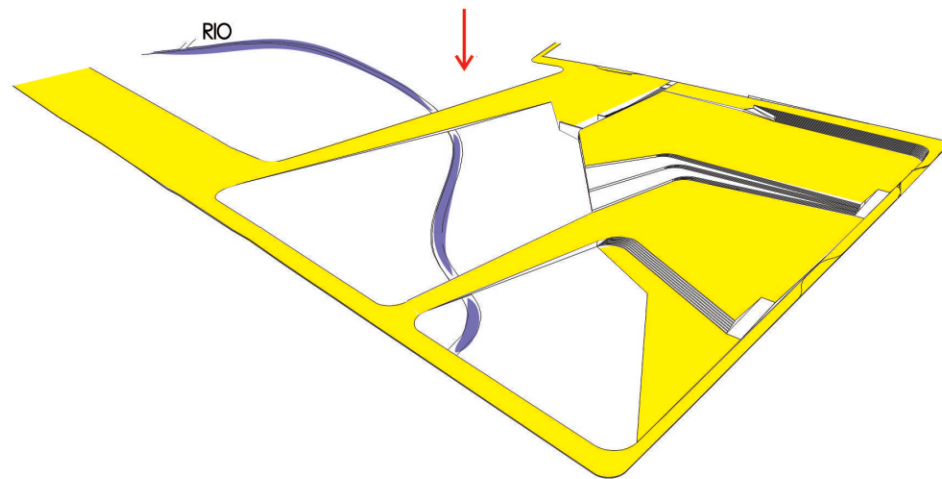
SITUAÇÃO ATUAL DO TERRENO

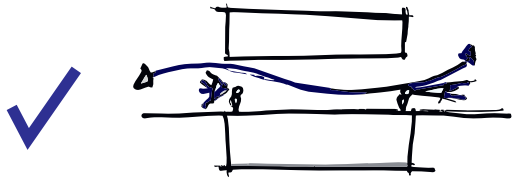
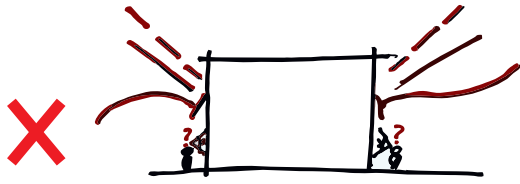


APROVEITAR NIVELAMENTO EXISTENTE

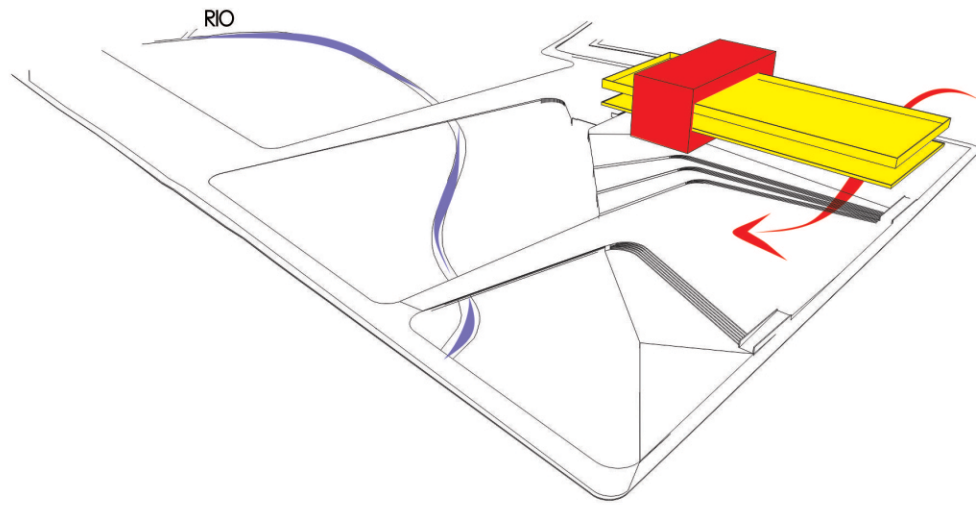


NIVELAMENTO E CRIAÇÃO DE PRAÇAS

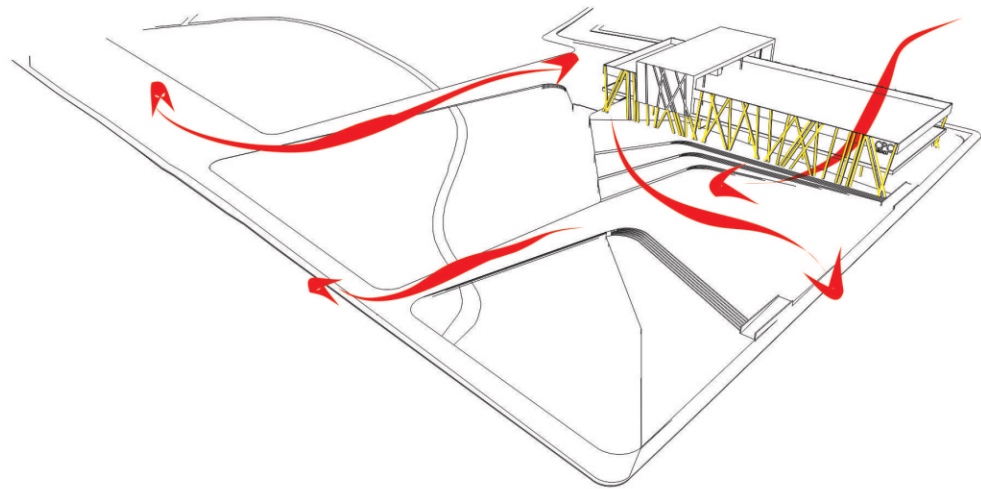




LAJES ESTRUTURAIS E BLOCO DE LIGAÇÃO



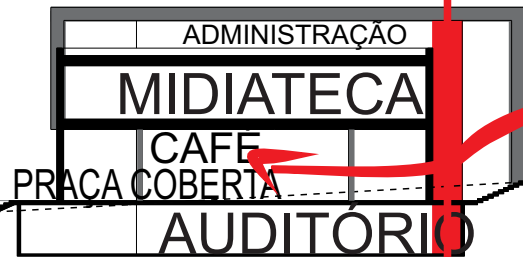
ESTRUTURAS E CIRCULAÇÃO



CIRCULAÇÃO

PARQUE

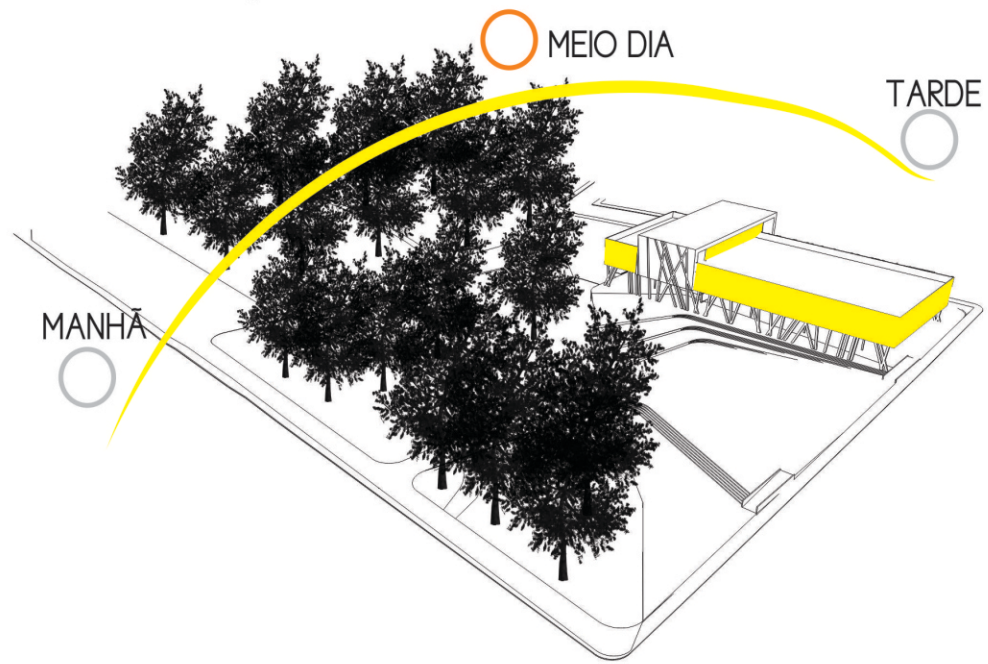
PRACA DECK



PASSEIO PÚBLICO

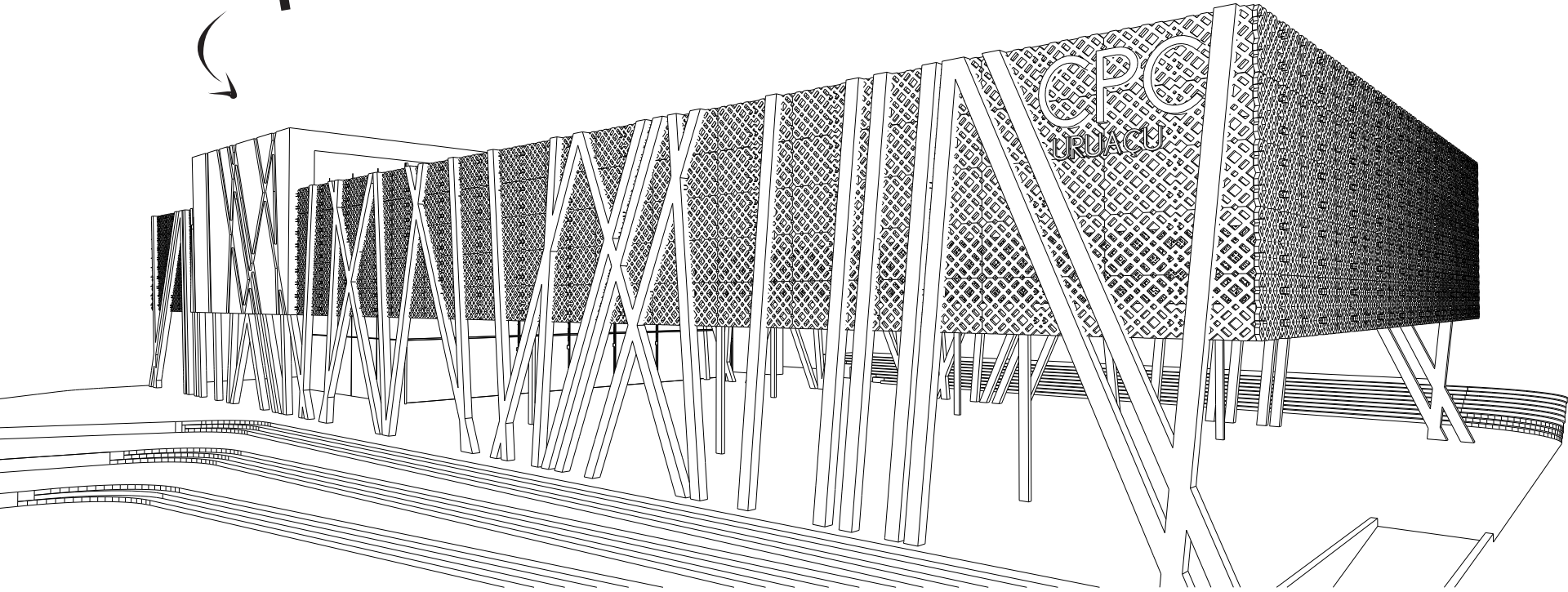
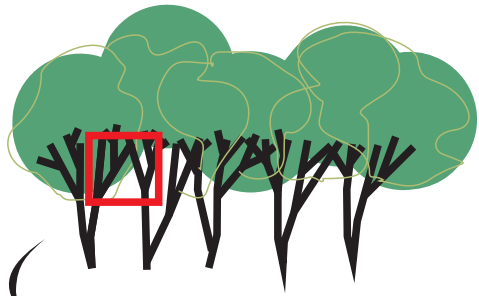
AUDITORIO

PROTEÇÃO TÉRMICA DO EDIFÍCIO E PARQUE



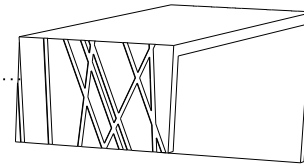


PROPOSTA PROJÉTUAL

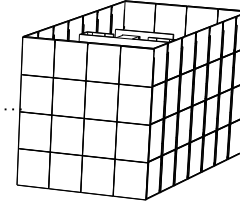


MATERIALIDADE

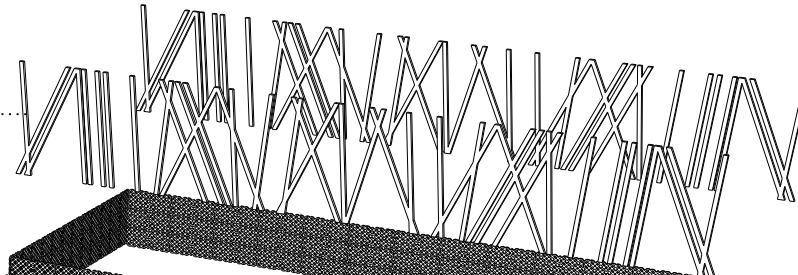
ESTRUTURA EM CONCRETO.....



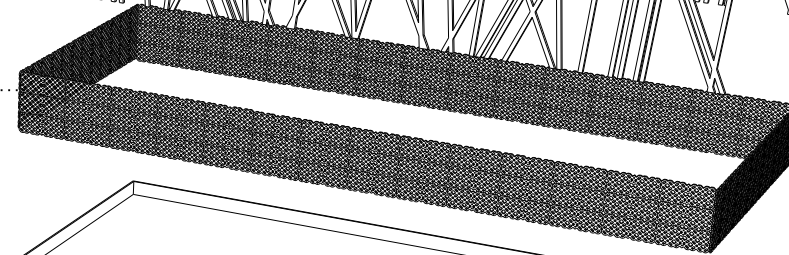
VEDAÇÃO PELE DE VIDRO.....
COM TRATAMENTO TÉRMICO



ESTRUTURA METÁLICA FIXA.....
NAS LAJES ESTRUTURAIS



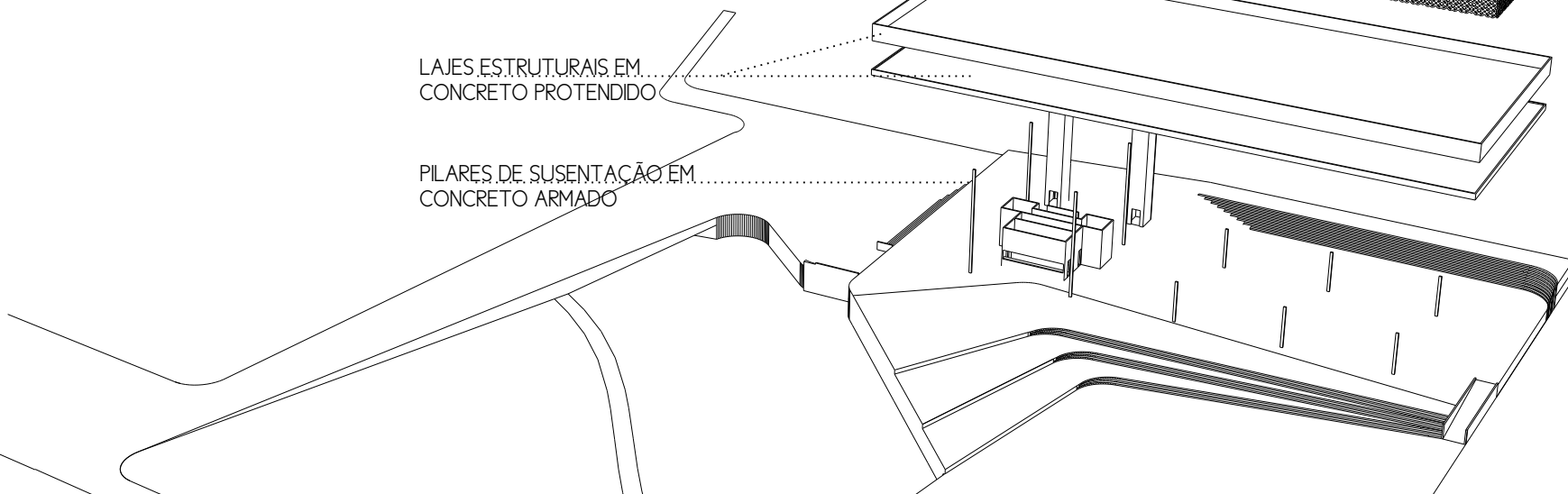
CASCA METÁLICA PERFORADA.....

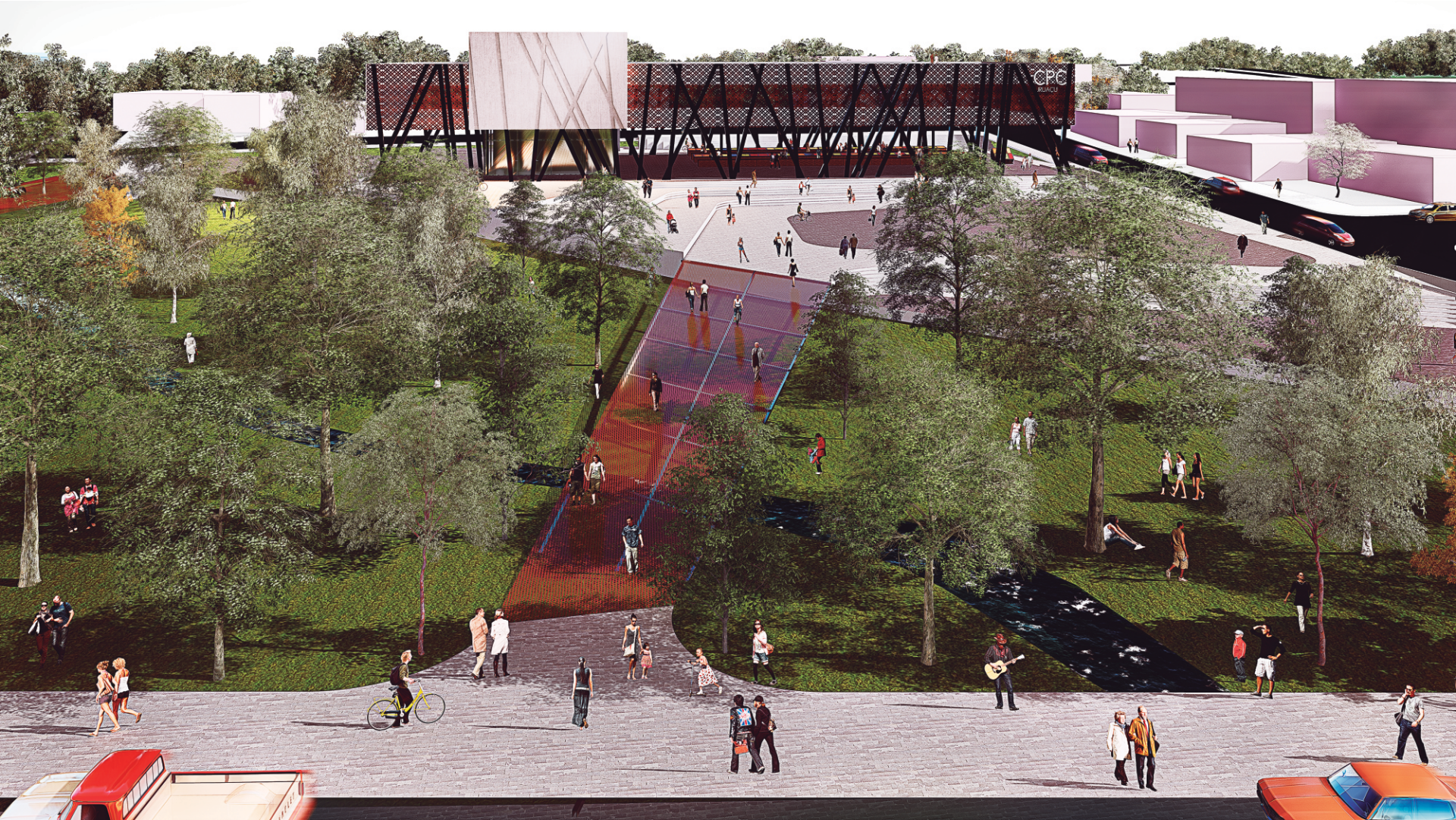


LAJES ESTRUTURAIS EM.....
CONCRETO PROTENDIDO

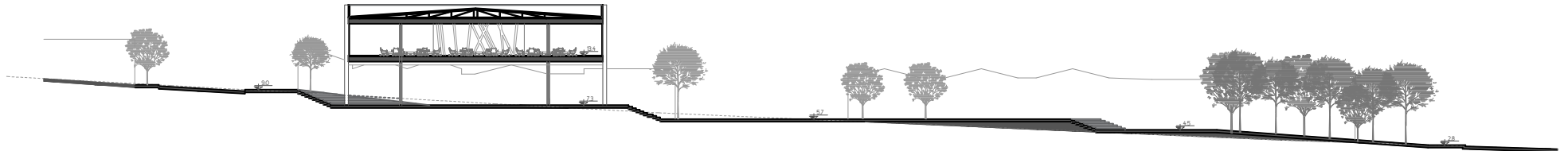


PILARES DE SUSTENTAÇÃO EM.....
CONCRETO ARMADO

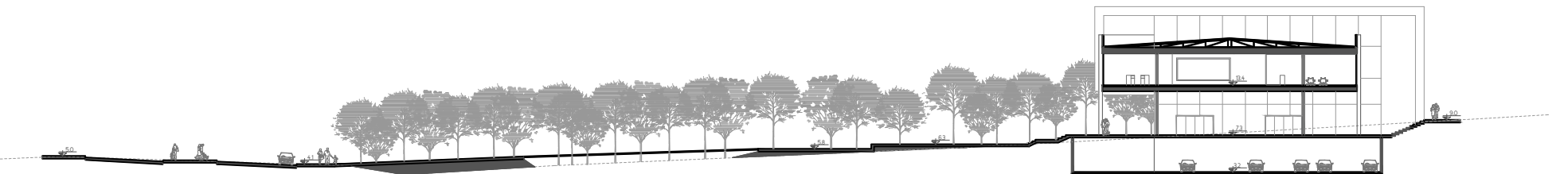




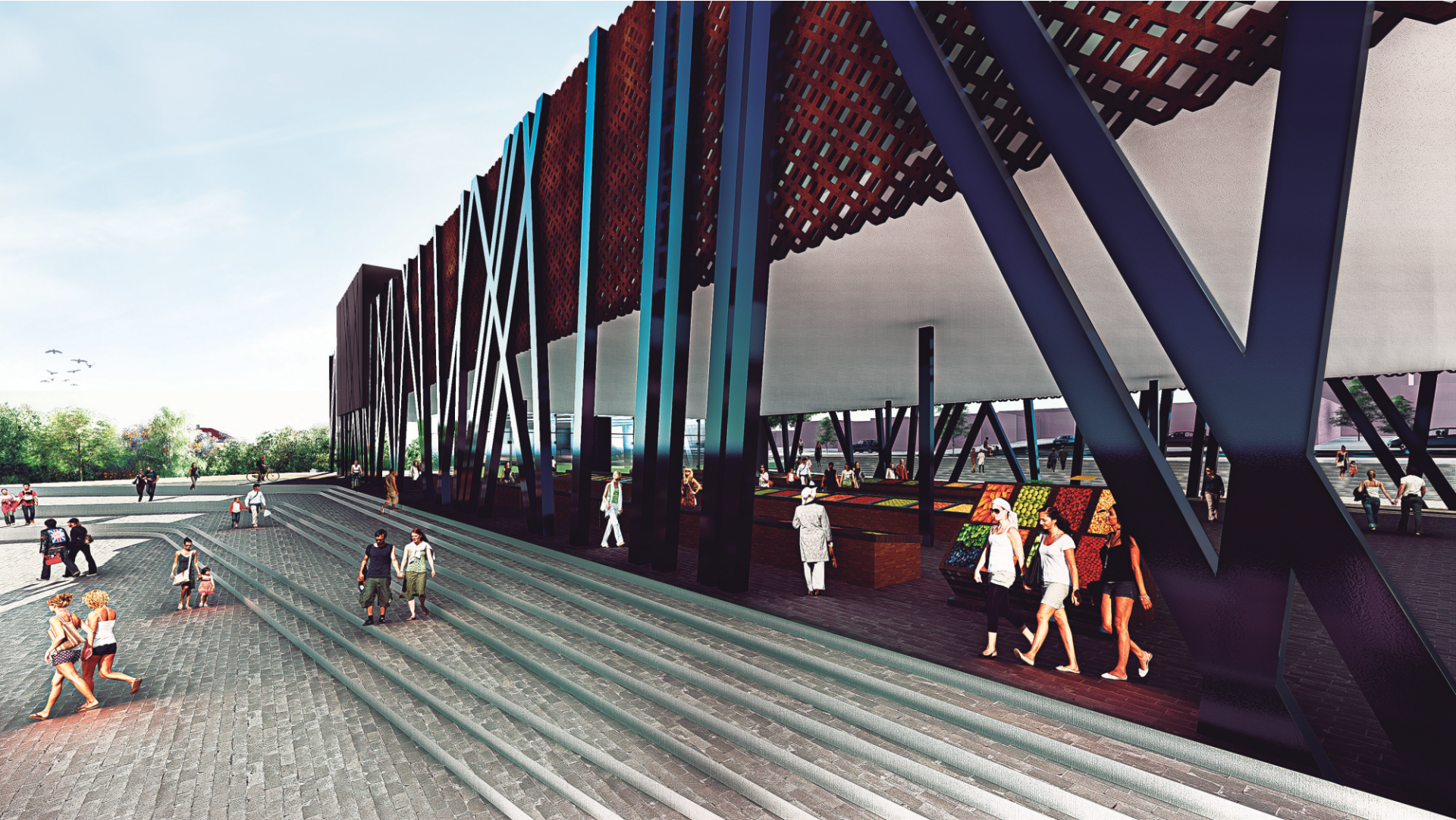
PLANTA IMPLANTAÇÃO E COBERTURA



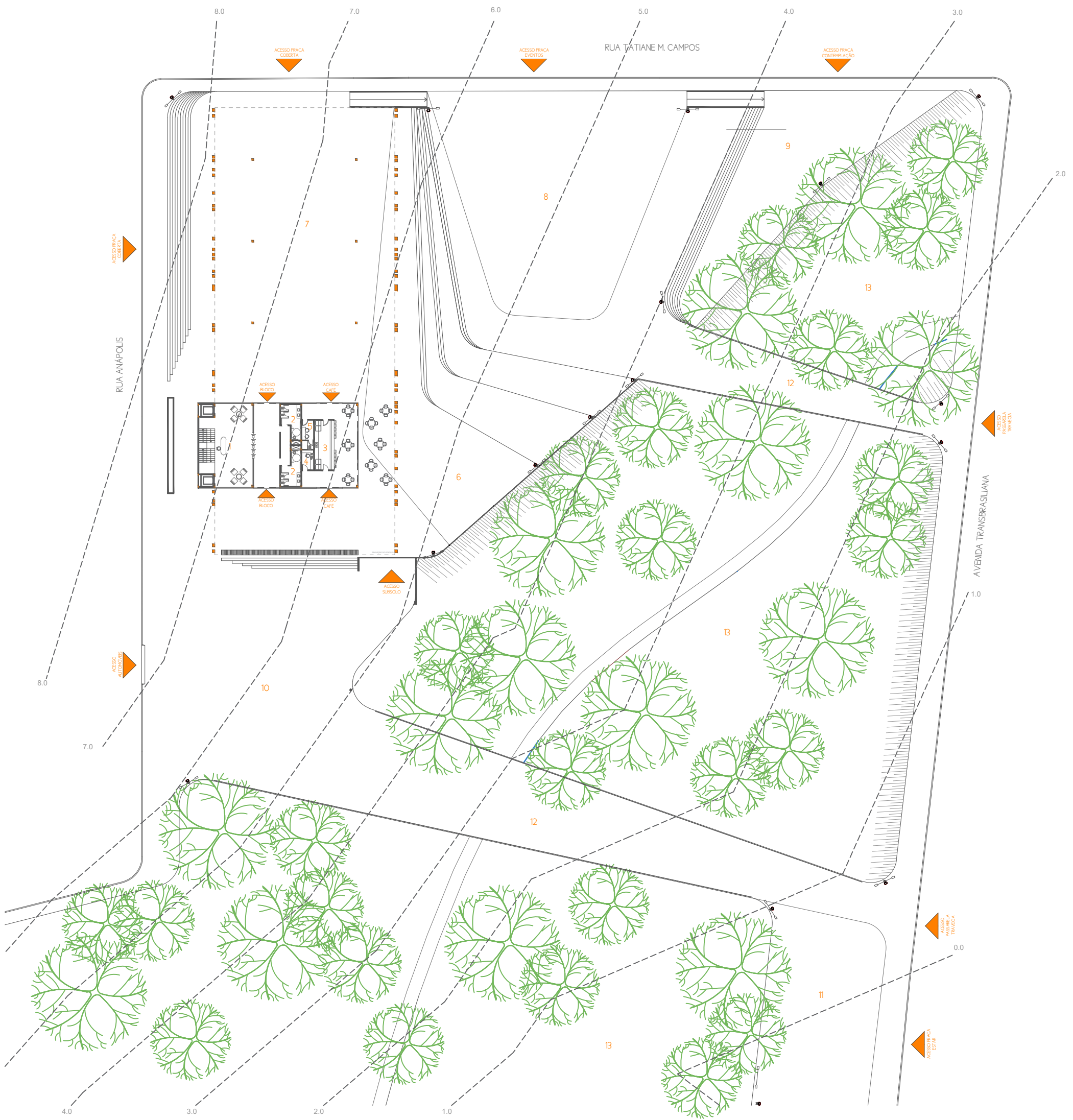
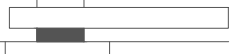
CORTE 1



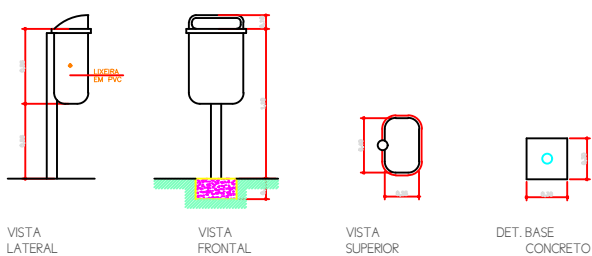
CORTE 2



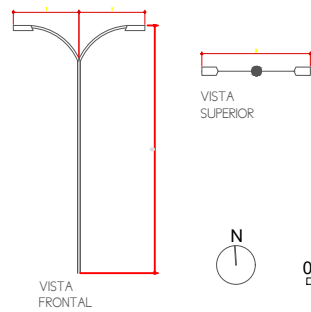
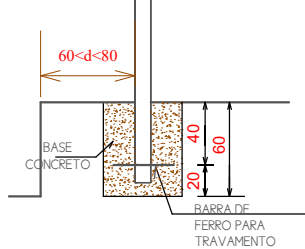
PLANTA BAIXA
GERAL TÉRREO



DETALHE LIXEIRA



DETALHE POSTE ILUMINAÇÃO



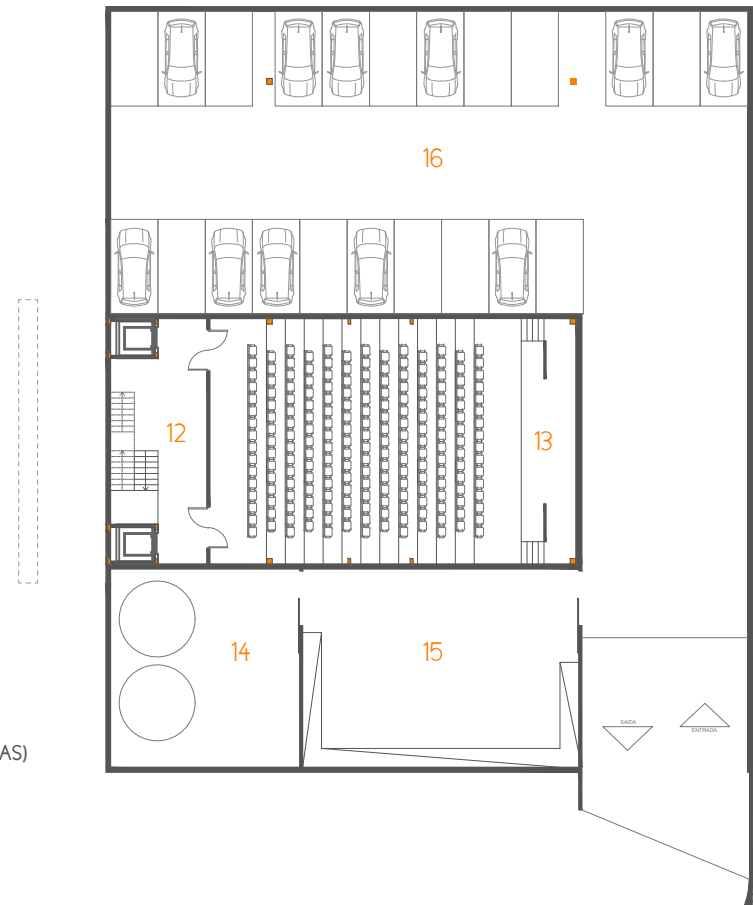
- 1. HALL DE ACESSO MEDIATECA
- 2. BANHEIROS
- 3. CAFE
- 4. SALA DE MONITORAMENTO
- 5. COPA FUNCIONARIOS
- 6. DECK
- 7. PRAÇA COBERTA
- 8. PRAÇA EVENTOS
- 9. PRAÇA CONTEMPLAÇÃO
- 10. PRAÇA TRAVECIAS
- 11. PRAÇA ESTAR
- 12. PASSARELAS
- 13. PARQUE



AUDITÓRIO



PLANTA SUBSOLO



- 12. FOYER
- 13. AUDITÓRIO (210 LUGARES)
- 14. CASA DE MÁQUINAS E RESERVATÓRIO
- 15. DEPÓSITO DE BANCAS
- 16. ESTACIONAMENTO FUNCIONÁRIOS (22 VAGAS)



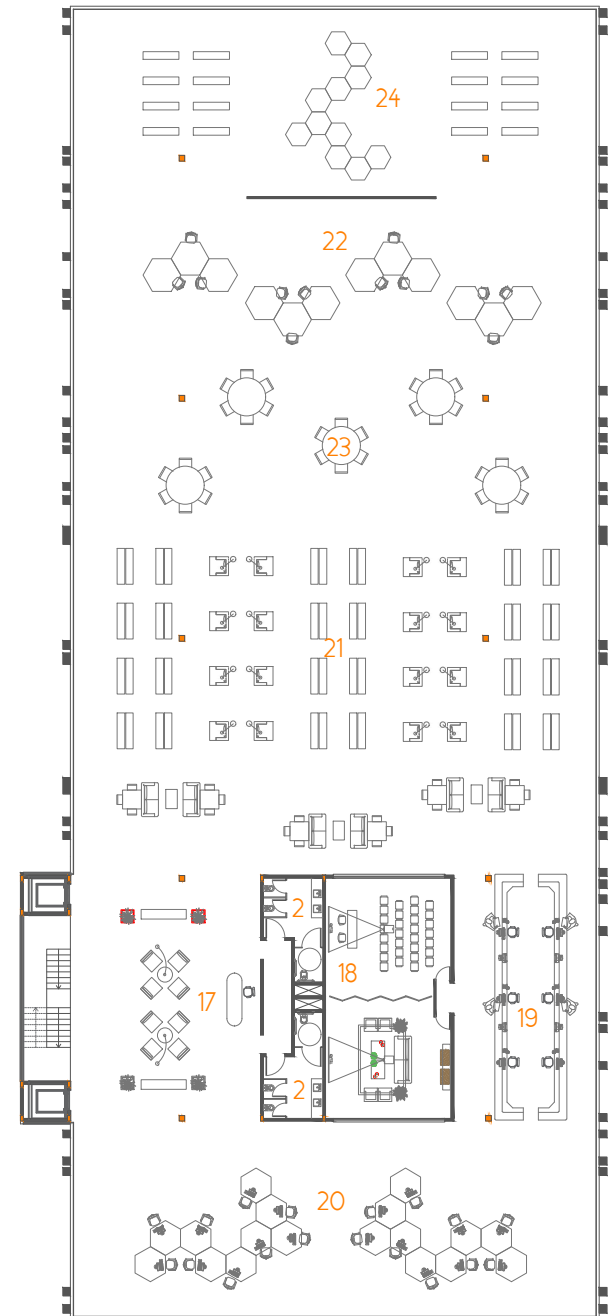
RECEPÇÃO MIDIA TECA



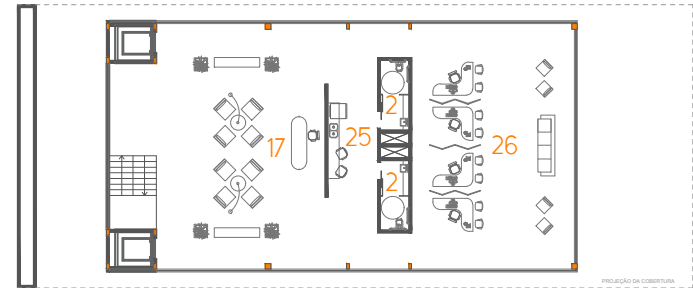
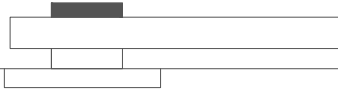
PLANTA PAVIMENTO
PRIMEIRO



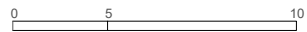
- 2. BANHEIROS
- 17. RECEPÇÃO
- 18. SALAS DE VÍDEO
- 19. ATENDIMENTO
- 20. ACESSO À INTERNET
- 21. ACERVO FÍSICO
- 22. ESTUDO INDIVIDUAL
- 23. ESTUDO COLETIVO
- 24. ESPAÇO KIDS

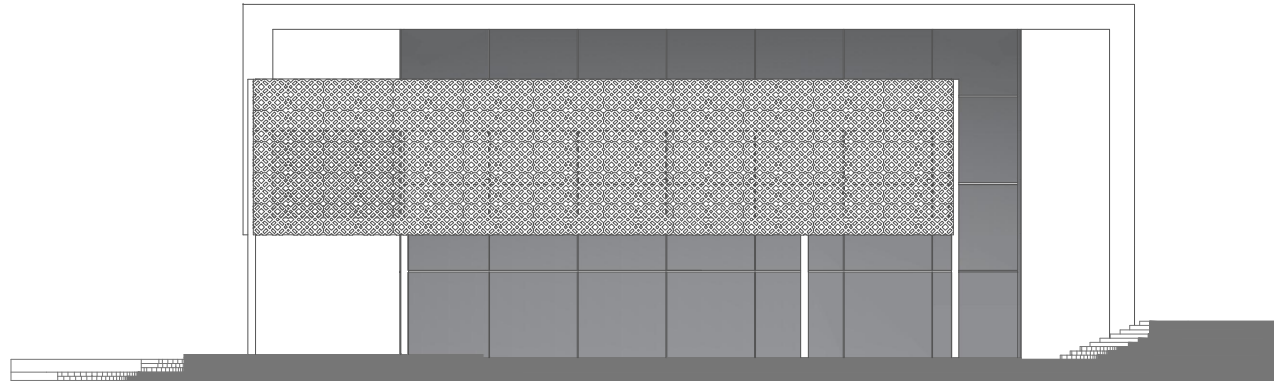


PLANTA PAVIMENTO
SEGUNDO

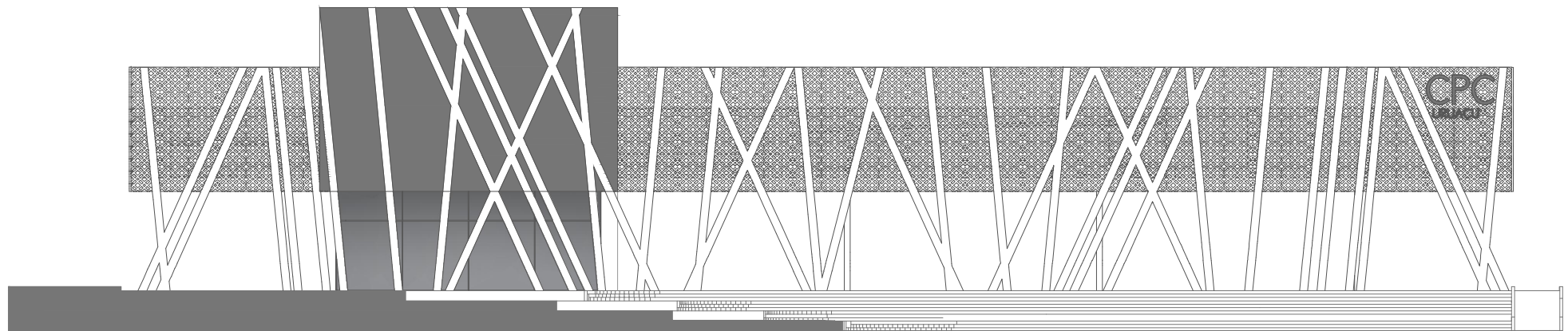


- 2. BANHEIROS
- 17. RECEPÇÃO
- 25. COPA FUNCIONÁRIOS (ADM)
- 26. ADMINISTRAÇÃO

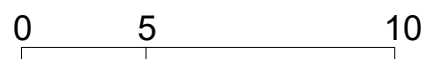


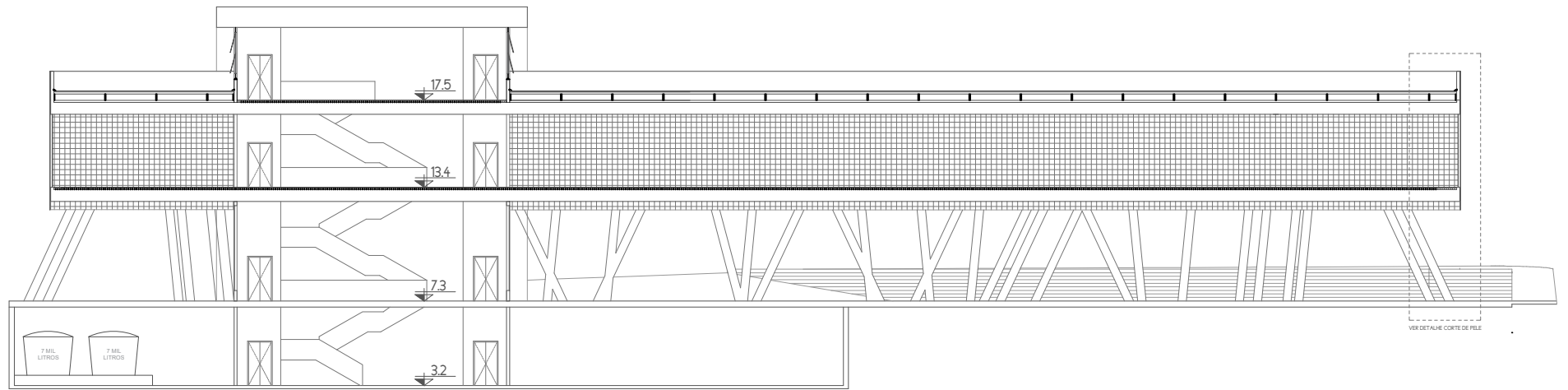


FACHADA NORTE

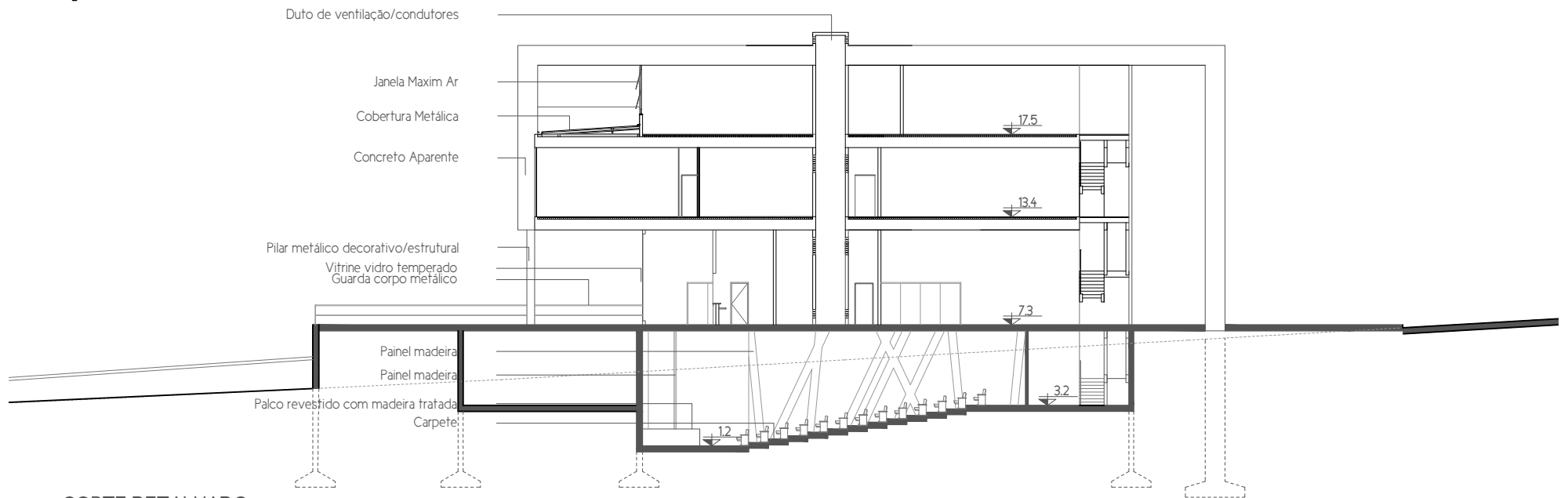
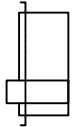


FACHADA LESTE

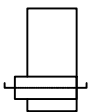


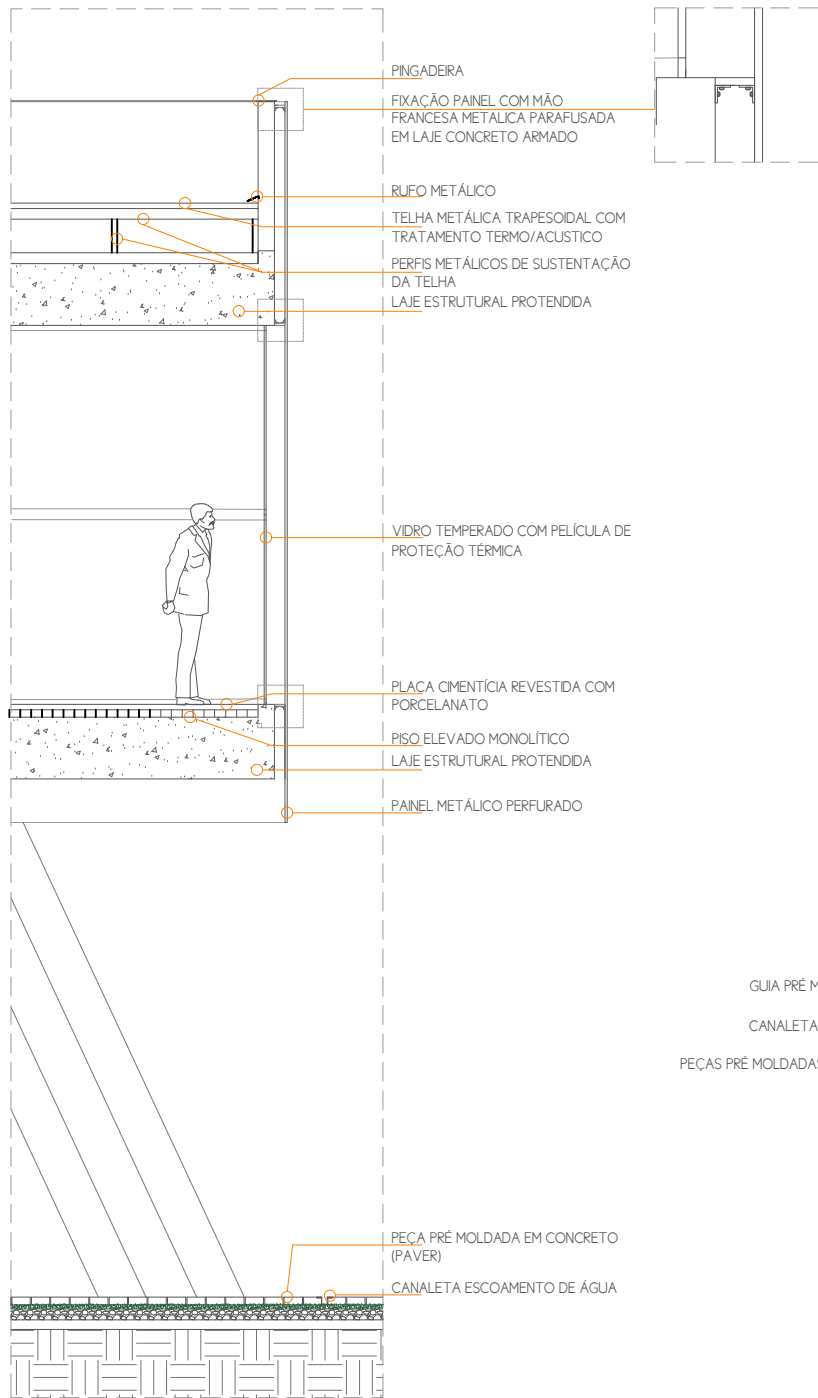


CORTE DETALHADO

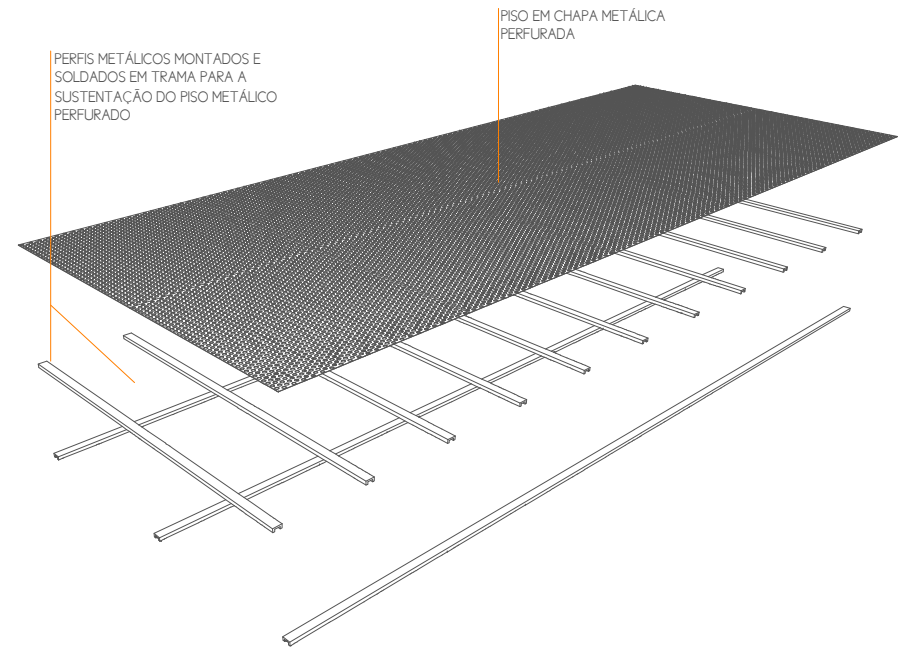


CORTE DETALHADO

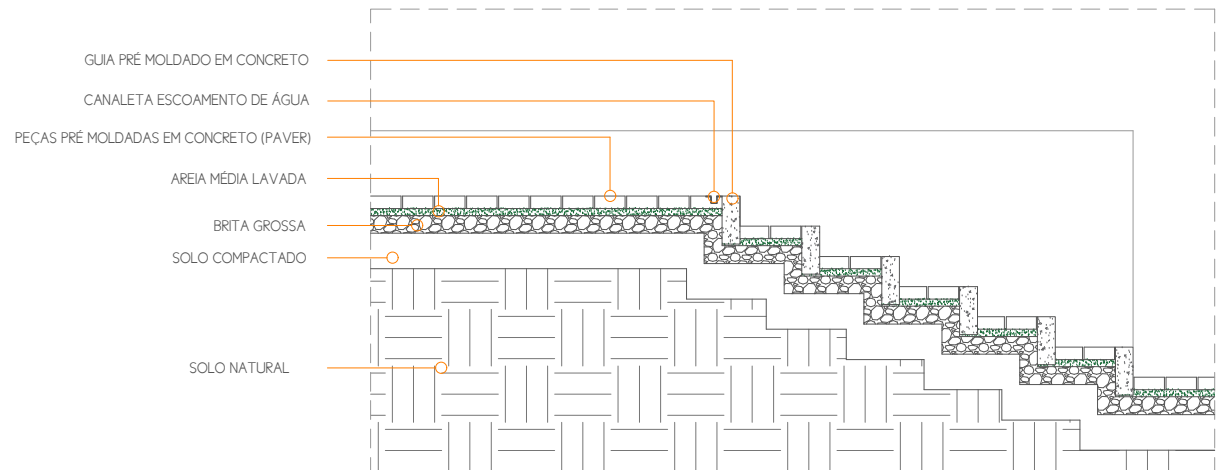




DETALHE CORTE DE PELE



DETALHE MATERIAIS PASSARELAS



DETALHE MATERIAIS PISO

The image features several thick, black, abstract lines that sweep across the page from left to right. These lines vary in curvature and slope, creating a dynamic, graphic background. One line starts high on the left and curves downwards towards the center. Another line starts lower and curves upwards towards the right. A third line is nearly horizontal, and a fourth line starts very low and curves upwards towards the right. The lines intersect and overlap, creating a sense of movement and depth.

OBRIGADA!

TFGr 2 | 2017/1
ACADÊMICA: JENIFFER ROMÃO OLIVEIRA
ORIENTADORA: CELINA FERNANDES